

**ALASKA DIVISION OF HOMELAND SECURITY &
EMERGENCY MANAGEMENT**
SITUATION REPORT 24-044 • February 13, 2024



Toll-Free 1.800.478.2337

Anchorage Area 907.428.7000

SEOC 907.428.7100

<p><u>SEOC Preparedness Level</u> Level 1 – Routine Operations.</p>	<p>http://ready.alaska.gov</p>	<p><u>National Terrorism Advisory System:</u> Read the NTAS Bulletin here</p>
<p>Maritime Security (MARSEC) Level:1- Minimum Appropriate Security Measures</p>	<p>WHO Novel Coronavirus Pandemic (COVID-19): 2019 Novel Coronavirus</p>	<p><u>Alaska Military Installation Force Protection Level:</u> FPCON Bravo</p>

(Significant changes from previous situation reports are red.)

Significant Issues:

Kotzebue – Frozen Water Lines

SEOC participated in a conference call with the City of Kotzebue, Native Village of Kotzebue, and the Northwest Arctic Borough regarding the frozen water line situation. SEOC will continue to work with the City of Kotzebue, Native Village of Kotzebue, and the Northwest Arctic Borough to address immediate needs and identify potential long-term solutions until permanent repairs can be made.

Koyukuk – Freeze Up

SEOC is continuing to monitor the situation. TCC RMW program sent a well pump and control box to Koyukuk last week. Two RMWs are expected to arrive in Koyukuk on Tuesday, February 13 and remain until Thursday to complete repairs.

Quinhagak Power Outage Disaster

The State Individual Assistance application hotline and website are open for Quinhagak residents at <https://www.ready.alaska.gov/Recovery/IA> or by phone at 1 (844) 445-7131. The deadline to apply for State Individual Assistance is March 2, 2024.

State of Alaska Department of Health (DOH)

The DOH stands ready to assist with all aspects of public health and, in the event of a public health emergency, is supported by the SEOC and other state departments as required.

For current information, see: <https://health.alaska.gov/dph/Pages/default.aspx>
<https://health.alaska.gov/dph/Emergency/Pages/prepared/default.aspx>

NTAS Bulletin

The U.S. Department of Homeland Security issued an updated National Terrorism Advisory Bulletin on May 24, 2023. The current and expired bulletins can be viewed at the below link.

<https://www.dhs.gov/national-terrorism-advisory-system>

Travel Alerts and Conditions

For current driving conditions, dial 511 or visit: <https://511.alaska.gov/>

Barry Arm Landslide / Tsunami Risk

For the latest information on the Barry Arm Landslide and Tsunami risk, click here:
<https://dggs.alaska.gov/hazards/barry-arm-landslide.html>

Earthquakes

United States Geological Service (USGS) Earthquake Information: <http://earthquake.usgs.gov/>
National Tsunami Warning Center: <http://tsunami.gov/>

Alaska Volcanoes

Kanaga Alert Level **Advisory** and Aviation Color Code: **Yellow**
Great Sitkin Alert Level: **Watch** and Aviation Color Code: **Orange**
Shishaldin Alert Level: **Watch** and Aviation Color Code: **Orange**
Gareloi Alert Level: **Advisory** and Aviation Color: **Yellow**

For Alaska Volcano updates, go to: <https://www.avo.alaska.edu/>

Air Quality Index (AQI) Advisories

For the most up-to-date Air Quality Index Advisories:
<http://dec.alaska.gov/Applications/Air/airtoolsweb/Home/Index>

Spills of Oil and Hazardous Substances

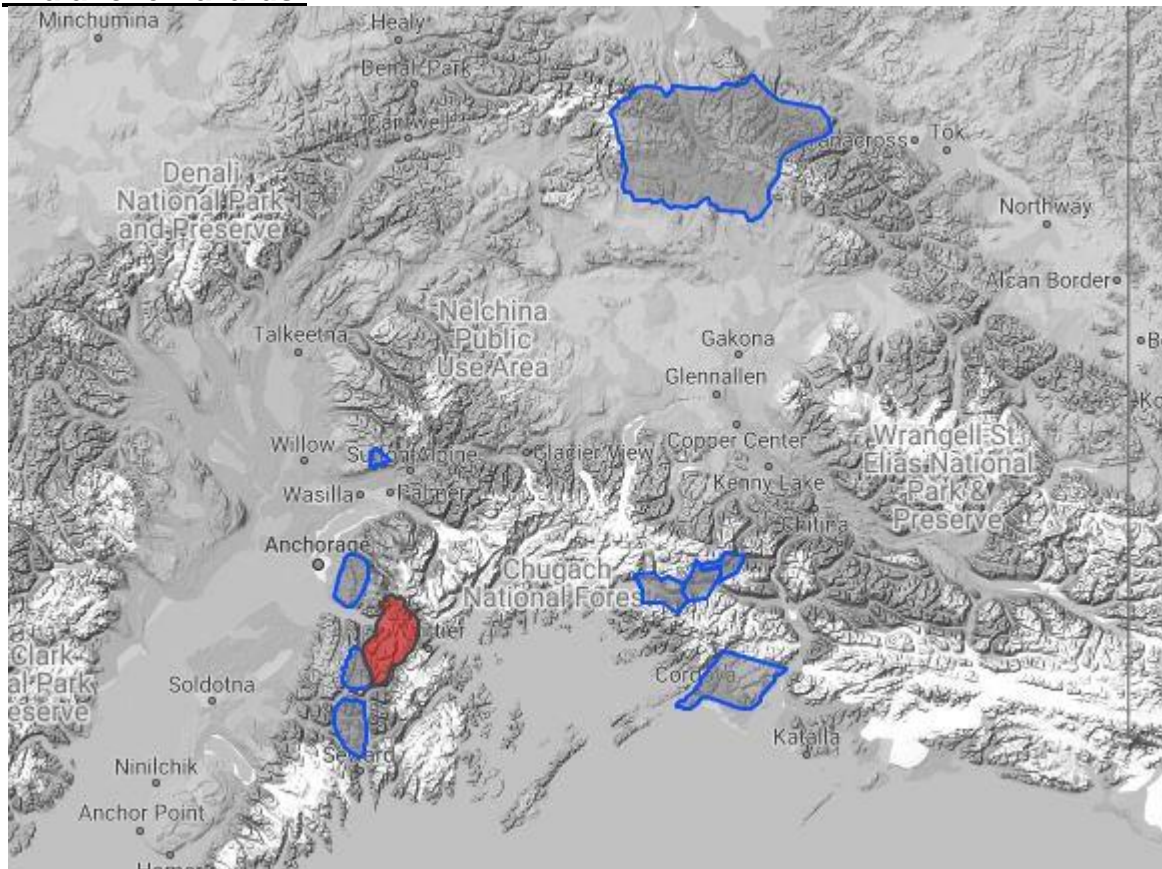
The Alaska Division of Environmental Conservation (ADEC) Spill Prevention and Response page is located at:
<https://dec.alaska.gov/spar/>

Alaska Cyber Security Information

State Employees may sign up for cybersecurity notifications and alerts at
<https://oit.alaska.gov/security>

Cybersecurity and Infrastructure Security Agency (CISA)-Cybersecurity Services and Tools:
www.cisa.gov/free-cybersecurity-services-and-tools

Avalanche Hazards:



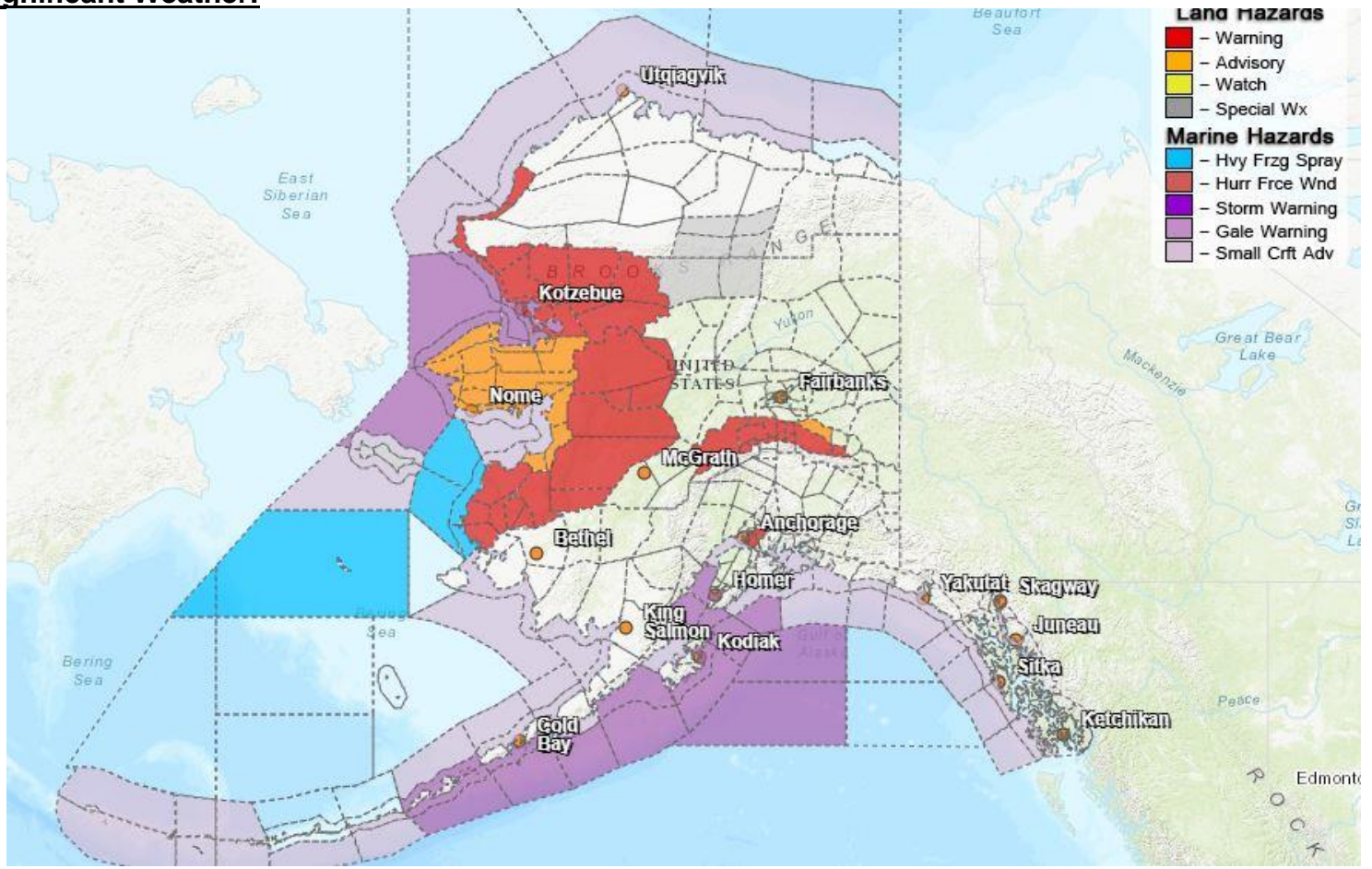
High Avalanche Danger

Travel in avalanche terrain is not recommended. Avoid being on or beneath all steep slopes.

- Turnagain Pass – Considerable at mid to high elevations, Considerable at low elevations.

For more information and the most current avalanche conditions, go to <https://alaskasnow.org>

Significant Weather:



Special Weather Statement

- **Bristol Bay** – in effect until midweek for a series of storms that will bring rain and snow to the area.
- **Noatak Valley, Kivalina and Red Dog Dock, Lower Kobuk Valley, Baldwin Peninsula, Northern Seward Peninsula, Shishmaref, Bering Strait Coast, Southern Seward Peninsula Coast, Interior Seward Peninsula, Eastern Norton Sound and Nulato Hills, St. Lawrence Island, Lower Koyukuk Valley** – in effect for early this week for strong winds and mixed precipitation.

Winter Storm Warning

- **Yukon Delta Coast, Lower Yukon River** – in effect from 3pm this afternoon to 9pm Tuesday.
- **Middle Yukon Valley, Lower Yukon and Innoko Valleys** – in effect until 6am Wednesday.
- **South Slopes of the Western Brooks Range, Noatak Valley** – in effect till 3pm Wednesday.
- **Kivalina and Red Dog Dock; Lower Kobuk Valley; Baldwin Peninsula and lower Koyukuk Valley** – until 3am Wednesday.
- **Western Arctic Coast** – until 6am Wednesday.

High Wind Warning

- **Anchorage** – in effect until noon Tuesday for Anchorage Hillside.
- **Eastern Alaska Range North of Trims Camp, Northern Denali Borough** – in effect from noon today to 3pm Wednesday.
- **Yukon Delta Coast; Lower Yukon River** – until 9pm this evening.

Wind Advisory

- **Delta Junction** – in effect from noon today until 9am Friday.

For more information and the most current weather, Watches / Warnings / Advisories go to:
<https://www.weather.gov/arh/>

The Next Situation Report will be **February 14, 2024**. A significant change in the situation or the threat level will prompt an interim report. This report is posted on the internet at
<https://ready.alaska.gov/sitrep>.

To register for email distribution, go to <http://list.state.ak.us/mailman/listinfo/dhsem.situation.report>.
Direct questions regarding this report to the SEOC at 907-428-7100 or seoc@alaska.gov.